



knee-deep in history

The Scribe

July/October 2023

Palmerton Area Historical Society
*Palmerton, Pennsylvania proudly listed on
The National Register of Historic Places*

Palmerton Celebrates 125 Years Since Its Founding *Allentown Symphony Concert to Mark This Event*

In 1826, as the first days of July dawned, the lives of two men – each a past President of the United States – drew near to an end. Each yearned to last just a few days longer – to July 4th - so they might witness the 50th anniversary of the republic they had helped create.

John Adams of Massachusetts and Thomas Jefferson of Virginia played vital roles in the events that culminated in the Declaration of Independence and, although they were political adversaries, they shared a deep admiration for each other. This friendship grew even stronger after they left office. It was only fitting that at midday on July 4th, John Adams would think of his friend and utter his dying words – “Jefferson still survives.”

There was no email, no telephone, no telegraph – so Adams could not have known that Jefferson had passed away five hours earlier, and although his dying words were not recorded it is likely his last thoughts were of Adams. What was so important to these two men that urged them to hold on for a few

more days so they could celebrate this anniversary with a small group of family and friends?

It is important for individuals to remember events that have shaped a nation or a community and have had a profound effect on its future. These events must be periodically revisited and the achievements passed on if the sacrifices of past generations are not to be lost. On July 3rd, Palmerton will celebrate the 125th anniversary of its founding. Although the significance of this day may not match that of the 250th anniversary of the Declaration of Independence, it is right that it be duly recognized.



On Sunday afternoon August 27th, the Allentown Symphony

Orchestra will perform a concert at the Palmerton High School that will feature easily recognizable classics and popular numbers by John Williams and others. This will be the first time the orchestra has performed in Carbon County and almost assuredly it will be a sold-out performance. Details on ticket availability and sponsorships of this memorable event are included on an enclosed slip sheet.

Palmerton Area Historical Society

PO Box 267 ~ Palmerton, PA 18071
www.palmertonhistorical.org
palmertonhistorical@ptd.net
(610) 824-6954

OFFICERS and BOARD OF DIRECTORS

President

Jane Borbe

Vice President

David Taschler

Secretary

Susan Steigerwalt

Interim Treasurer

Peter Kern

John Aulenbach

Roy Christman

Carol Curcio

Bert Holczman

Vinita Horinko

Richard Horinko

Lynn Shupp

COMMITTEE CHAIRPEOPLE

Publications

Vinita & Richard Horinko

Kibler School

Roy Christman

Little White Church

Jane Borbe

LWC Building and Grounds

Richard Horinko

Membership

Jane Borbe

PAHS Steering Committee

Jane Borbe

Program Coordinators

Vinita Horinko & Marianne Smelas

"The Scribe" Editorial Staff

Jane Borbe, Peter Kern & Susan Steigerwalt

2023 Monthly Program Schedule

*all programs held in the Knight's Gallery of the Palmerton
Library unless otherwise noted (handicap accessibility)*

July 10 (6:30pm)

The Town That Zinc Built

David Taschler

August 14 (5-8pm)

Annual Picnic

Walnutport Canal Pavilion

August 18 (9am-3pm)

Sidewalk Sale

Heritage Center

August 27 (2pm)

Allentown Symphony Concert

at Palmerton High School Auditorium

September 9-10

Historic Bus Tours at

Palmerton Festival

October 9

Palmerton - Then & Now

Lynn Shupp

November 13

Palmerton Veterans Remembered

George Duell

December 3

Ecumenical Service (3pm)

at Little White Church

Annual Banquet (4:30pm)

at Bert's Steakhouse

Palmerton 1898 -1923

The Growth of the Community

The Silver Anniversary year of 1923 was made memorable by the publication of a well-researched and documented history of the area. The 178-page book provides a record spanning 300 years from the days of William Penn. It is further enhanced by more than 130 advertisements from local businesses and organizations. It shows how in less than 25 years, Palmerton had grown from a few randomly placed farms to a thriving, professionally managed community.

Although Stephen Palmer would not live to celebrate this first of many anniversaries, his foresight was obvious. He, like many of his fellow investors, was a New Yorker who was witness to the challenges of growth that accompanied the period of immigration in the late 1800's. Thus, it was not surprising that by the Silver Anniversary there was a hospital with a link to Baltimore's prestigious Johns Hopkins Hospital, an attendant school of nursing, a company-staffed sociological department to monitor and encourage health and hygiene, a dozen churches, and more than two dozen local schools.

In 1912, with a population of 6,000 citizens, Palmerton was formally incorporated as a borough. Its infrastructure was in constant development. In 1900, work was begun on a sewage disposal company that by 1923 would be processing 425,000 gallons per day.

The Palmerton Lighting Company and the Palmerton Telephone Company also reflected the planned growth of the community. The demand for these services increased with the construction of the iconic Horse Head Inn and by 1923 more than 600 homes and businesses were being connected to the rest of the country through the Bell Telephone Co and AT&T. Services that are taken for granted 100 years later were considered to be marvels of technology in 1923.

Perhaps no other services had an impact on the early development of Palmerton than those provided by the Palmer Land Company and the Palmer Water Company. Working in concert, they helped address the need for the new homes and together with local banks encouraged home ownership.

A summary cannot adequately relate the achievements of those first 25 years. Independent businesses addressed needs from "hat cleaning" to "watch cleaning" and the local Justice of the Peace could also provide you with all your life and fire insurance. A Citizens' Cooperative was formed in 1907 that morphed into a "Board of Trade" similar to today's Chamber of Commerce. Not only did it assist local businesses it helped focus borough planners on issues of housing, lighting, and street maintenance.

continued on next page

Palmerton 1898 -1923

continued from previous page

Palmerton of 100 years ago was a source of pride to those who lived and worked here. The role of The New Jersey Zinc Company during that period was one of guidance rather than governance. NJZ simply provided the road map. The diverse groups that zealously protected their immigrant heritage worked

together to forge a dynamic and prosperous community that would survive global wars and domestic financial depressions. These first 25 years are an example of what can be achieved through individual toil and effort and should be remembered in anniversaries to come.

The Palmerton Neighborhood House

Built in 1911 as a “common meeting place and clearing house for constructive community ideas,” it serves today as the offices of the Borough of Palmerton. The building originally included a gymnasium and auditorium, a library, a game and pool room (for men only), four bowling alleys in the lower level, and a club room, a well-equipped kitchen, and living quarters for resident staff on the upper floor.

It was the expectation that this center “would make this community an ideal unit of a great state and nation.”

The spacious area set aside for the library was initially provided with 1600 books through contributions and purchases – a number that soon grew to over 3500 volumes. In addition, copies of thirty magazines were provided through subscriptions. By early 1923, library enrollment had passed the 700 mark.

Not to be overlooked was the emphasis NJZ placed on employee health. Room was set aside for the Company’s Sociological Staff whose Public Health Nurse schooled new parents in sanitary practices, pre-natal and infant care, and provided general health education programs.

The demand for gymnasium use and sports encouraged the creation a formal program under the supervision of a Physical Education Director. Regular classes were held in exercises and in training and coaching of various sports. The concept of a



Neighborhood House was another example of the innovative approach taken by The New Jersey Zinc Company during Palmerton’s formative years.

**THE FOLLOWING PAGES
REPRINT MANY OF THE
ADVERTISEMENT
THAT WERE A PART OF THE
1923 SILVER ANNIVERSARY
PUBLICATION**

**YOU ARE ENCOURAGED TO
READ THEM FOR INSIGHT
INTO PALMERTON
100 YEARS AGO**

Quality

**FOR
Service**

Satisfaction

IN

Hardware, Cutlery, Seeds, Kitchen Utensils, Sporting Goods

Make your selections at

STEMLER'S HARDWARE STORE

Where fair prices always prevail

THE WINCHESTER STORE

Among the advantages

that this progressive Borough has enjoyed since the beginning of its existence has been the use of good pure water.

A good water supply is a town's greatest asset. Homes and industries are assured of healthy conditions as long as the water supply remains uncontaminated. Epidemics of disease are more easily curbed when the water supply is pure and abundant.

This company has installed water plugs for the protection of those sections where our mains are located against fires.

Our water is pumped from deep artesian wells on the side of the Blue Mountain Ridge, which insures freedom from contamination.

The Palmer Water Company

H. N. BLUNT, Supt.

Pal, Savings & Trust Company Building

Established in 1905

This shop has continued to resole the shoes of a generation who have made Palmerton what it is today. Since the coming of the automobile we have added the repairing of auto tops and curtains, vulcanize and repair tires and tubes, and retire go-carts

Our facilities are always at your service

E. W. BORGER
438 Delaware Avenue

PALMERTON

On This Your Twenty-Fifth Birthday

We can not let it go by without complimenting you on your great and glorious accomplishments.

You have set a pace that will be had to beat. You have not only made an enviable record in Carbon County, but earned the reputation of being one of the leading towns for your age in the United States.

May you continue to prosper.

THE UP-TO-DATE

M. BESONDER, Prop.

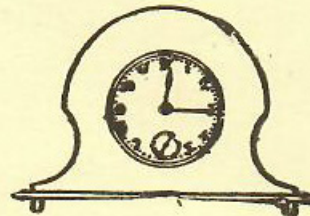
306-308 Delaware Avenue

Palmerton, Pa.

Watches Cleaned While You Wait

**REPAIRING OF WATCHES AND
CLOCKS A SPECIALTY**

M. KONEFFSKY



254 Delaware Avenue

The old families

and the newer ones too, know the Kline Store at Hazard. Here we have served long and faithfully those who have lived in the neighborhood before and since Palmerton came into existence.

Our best wishes are for the continued growth and prosperity of this City of Zinc.

MRS. KLINE
GENERAL MERCHANDISE
Hazard, Pa.

THANK YOU

WE take this opportunity to express our sincere appreciation of the business you have entrusted to us. We shall endeavor to merit your patronage at all times by extending a cordial, willing, helpful service backed by ample resources and strength.

WE EARNESTLY SAY

"COME OFTEN"

The Citizens Bank of Palmerton, Pa.

W. H. BOYER
Pres.

D. M. REITZ
Vice Pres.

CLAUDE E. ASH
Cashier

The Art of Music

is inborn in every normal individual but the expression of that art must be developed under proper guidance and earnest practice. Especially is this true in the study of instrumental music. My forty-four years experience as teacher of piano, organ and theory both in colleges and as private instructor, is at the command of music students in Palmerton and vicinity.

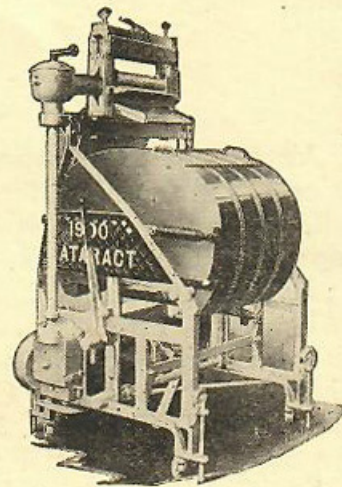
N. W. H. SCHAFER

Graduate of Royal Conservatory of Music
Stuttgart, Germany

Now located at
252 Delaware Avenue (Second Floor)
Palmerton, Pa.

For Clean Clothes Service

"CATARACTION"



Latest—Most Scientific Method
Ask us about it!
Phone 13-X

CARBON ELECTRIC CO.

F. D. SHINDEL, Prop.
Palmerton, Pa.

We Cannot Help Taking

a fatherly interest in this beautiful and fast-growing Borough because our bank was the first financial institution to locate here and give the community those facilities that have been the means of conserving its resources and increasing its prosperity.

The vision of the founder of Palmerton has been more than fulfilled in the development of today. And this is but the beginning. With but twenty-five years in the making, the progress has been phenomenal.

We of today are the builders of the Palmerton of tomorrow. After another twenty-five year period of constructive effort we may confidently expect to find a metropolis of vast industrial importance covering this region, and we who survive may feel proud of the part we have taken in that mighty development.



The First National Bank of Palmerton



A. D. CRAIG, President

A. A. ZIEGENFUS, V. President

L. M. ARNER, Cashier

ESTABLISHED 1910

Many Changes

have taken place in the years that this Meat Market has served the people of Palmerton. The town has grown to manhood and we have grown with it. We hope the next twenty-five years will see many of our present population still with us and enjoying that prosperity that is the right of every Palmerton citizen.

J. G. HEINTZELMAN

468 Delaware Avenue

Have you a recent photograph of yourself or the children?

Photographs help preserve family history. We like to watch the development of children from babyhood to manhood through photographs. In no way can the history of the individual be more faithfully recorded than by the photographic lense.

JOHN MANKOS

PHOTOGRAPHER

Delaware Avenue

Next to News Agency

Palmerton

was a very small place when this news agency was established. The business has grown with the town, and we are proud of the service we have given during these years. We are better able to meet the needs of the public in newspaper and magazine service than ever before.

Your favorite paper delivered daily

**PALMERTON NEWS
AGENCY**

J. S. Butz, Prop.

Our Part

in the building of Palmerton has not been a small one. Many of the homes that have beautified the town have been the work of our mechanics. We are looking forward to a far greater Palmerton when our vacant lots shall no longer be bare, but built up with fine stores and homes.

JACOB FRABLE

CONTRACTOR AND BUILDER

Lafayette Avenue

The Colonial Theatre

has brought pleasure to thousands of movie fans since it was opened in February, 1922. Only the best productions are booked by the management, and it is their aim to continue this high standard.

The Moeller Pipe Organ is another source of pleasure to our patrons while the appointments and conveniences are comfortable and efficient.

COLONIAL THEATRE

L. WOLENSKY, Prop.

The Gasoline Engine

has performed wonders since Palmerton was first planned. Today heavy loads of merchandise, building materials and household goods are transported from one place to another quickly, cheaply and with the utmost safety, by means of heavy trucks equipped with gasoline engines.

We have had much experience in this business of heavy hauling and our employes are careful and courteous.

GORDOS BROS.

Phone 99-X

Hazard Road

This Anniversary

of the founding of Palmerton gives every person here an opportunity for congratulation, both from the standpoint of participants as residents and joint owners of this fine town, and again as merchants and business people who have helped make it grow.

We look forward with much interest to the future and trust that its progress may not be hindered in any manner, but that the Palmerton slogan "Palmerton People Prosper" may always remain unchanged.

GLOBE STORE

W. L. REINARD, Prop.

The home of
Hart Schaffner & Marx Clothes

Poho Poho Creek

Furnishes drinking water for thousands of people. In winter when it freezes over, the ice is cut and stored in our large ice houses. Four thousand tons of ice can be stored here to lend its cooling effect in hot summer months.

A. A. LESHER

Parryville and Palmerton
Natural Ice

Twenty Years Before Palmerton Was Born

the Mauser Mill Co. was serving farmers and stores in and around what is now the great and beautiful Palmerton, with the same quality goods we are serving today.

Palmerton, we congratulate you on what you have accomplished, may your twenty-fifth birthday usher in a future brimful of opportunity for service, for happiness and for success.

MAUSER MILL COMPANY

Palmerton, Penna.

The Play Hours

of men's lives are of as much importance and worthy of as much consideration as his working and sleeping hours.

The discovery of motion pictures has led to a form of entertainment never before equalled in holding popular interest. With the development of film and operating machines it has been possible to produce plays, news of the day, travel pictures, records of national and historical events, which in turn are reproduced in our motion picture houses.

We have tried to give the people of Palmerton and vicinity the best in pictures, accomodations and surroundings in our theatre, and we believe our efforts are appreciated.

PARK THEATRE

D. M. BROWELL, Prop.

Bus Service

between Bowmanstown and Palmerton has done much in recent years to make communication easier.

A schedule is maintained throughout the day and evening. Two busses are in constant operation.

Ask for a schedule from any of our operators

LEHIGH VALLEY TRANSPORTATION CO.

S. V. NOLL, Prop.

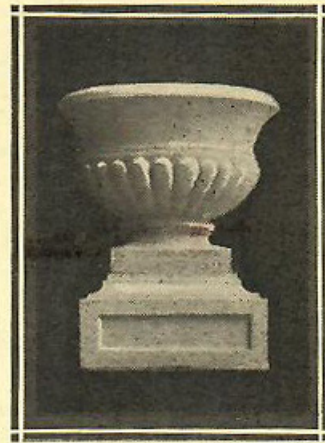
CONSTANTINE BROS.

**QUICK LUNCH
CONFECTIONERY
ICE CREAM
CIGARS
CIGARETTES
TOBACCO
HAT CLEANING
SHOE SHINING
POOL**

283 Delaware Avenue

Established 1906

JOHN E. LIGHT MFG. OF CEMENT PRODUCTS



**Cement Blocks, Cement Lintel, Chimneys, Steps, Sills, Capping, Pillars
Ornamental Work**

236 Lafayette Avenue

R. A. SNYDER

WHOLESALE FRUITS AND PRODUCE

223 DELAWARE AVENUE

Established September, 1922

A Cog in the Wheel

of progress might happily illustrate the part our market has played in the growth of this beautiful Palmerton. We are glad to have had part in this work of building up strong and healthy men and women from the boys and girls through our service.

MILKOWIC'S MEAT MARKET

L. MILKOWICS, Prop.
4th and Lehigh

As Old As Palmerton

signifies that our store has been giving service at Hazard for twenty-five years.

We congratulate all who have had the vision to make Palmerton what it is, and are glad we have had some part in its building.



MRS. WM. BEHLER

GROCERIES AND PROVISIONS

Hazard Road

Millinery

is a very comprehensive word and includes practically every kind of feminine head covering.

But there is a vast difference in the kinds of millinery.

Where distinctiveness and style enter into the creation, there begins an art, and art in millinery must be studied and understood.

**Our patrons are satisfied that
the hats we sell are**

MILLINERY

THE GRAFAIR SHOP

Miss Mary S. Faust Prop.

Next to Colonial Theatre

For Twenty-five Years

fishermen from far and near have been coming to Palmerton for artificial flies manufactured in our plant. And they are coming in greater numbers each succeeding year.

H. BROBST & SON

244 Columbia Avenue

Palmerton, Pa.

The History of Clothing

began in the Garden of Eden. Since that time styles have changed from the ridiculous to the practical. Today men's apparel has been standardized all over the world. Here in Palmerton we have been making men's clothing since 1914.

PAUL PUPAK

415 Delaware Avenue

Our business

was established to help others. Leaks in plumbing, spouting, toilets, etc., repairing of furnaces, tinsmithing of all kinds are some of the troubles we have adjusted.

New installation of plumbing and heating plants is our specialty

A. A. COSTENBADER

Palmerton, Pa.

At the top of the Hill

on Delaware Avenue you will find plenty to eat and drink.

Patronize our steam bar and restaurant when hungry

WALDORF HOTEL

A. L. GERHARD, Prop.

180 Delaware Avenue

Board by day, week or month

European Plan

Heating and Plumbing

Sheet Metal Working

Pipeless Furnaces Installed

Prizer Ranges

Automobile Gas and Oil

EUGENE GEORGE

Aquashicola, Pa.

It is a proud moment

when the father of a family becomes the owner of a home. Many men have experienced this moment in Palmerton since a large percentage of the homes are owned by the occupants.

No better place can be found to build a home than in a growing town where values do not decline and where the continuance of industry is assured.

This is a young town, composed of young people. Why not make the most of the opportunities afforded you in building sites, preferred assistance and beautiful surroundings?

This Company has long had a building agreement which makes it easy for employees of The New Jersey Zinc Co. (of Pa.) and subsidiary companies to build a home on the time payment plan.

For particulars consult

H. N. BLUNT, Agent

The Palmer Land Company

Palmerton Savings & Trust Co. Building

Another successful season

for Studebaker cars is well under way. For 71 years the name Studebaker has stood for integrity, quality and value. The name has been passed on to the automobiles and they are making good.

Power to satisfy the most exacting owner.



Terms to meet your convenience

PALMERTON GARAGE

334 Delaware Avenue

THIS IS A STUDEBAKER YEAR

This History is a product of the



PALMERTON PRINTING COMPANY

where booklets, catalogs and
JOB PRINTING of every de-
scription are produced just as
wanted by critical customers.

The Palmerton Press

ISSUED EVERY FRIDAY

615 Third Street

That satisfied feeling

which comes over one when he has dined well has been fully developed by the cooks at the

PALMERTON HOTEL

3rd and Delaware

by the delicious home baked beans, home-made pies, ham and egg dinners quick lunch sandwiches, party dinners and the like.

If you have never tried our service you have missed something.

Young People

who start housekeeping need furniture, rugs and the like. Old folks who have reared families want to renew their furniture to make the home bright when the young folks return to visit.

Our furniture is of the finest quality and the prices are within the reach of our customers.



CHARLES E. HELMUTH

Aquashicola

Our Immense Oven

is filled three times daily with bread and cake to appease the hunger of the ever increasing numbers that make up the population of Palmerton. We have been baking and delivering bread to Palmerton homes since 1905, and have done what we could to help bring our town to its present prosperous condition. Let us all get together and see what can be accomplished in another twenty-five years.



F. W. DIEHL

B A K E R
Palmerton, Pa.

Hiss!

Zoom!

Bang!

Hurrah for the Fourth of July
Headquarters for Fireworks

BEER'S VARIETY STORE

187 Delaware Avenue

Ice Cream Soda and Candies

We carry a full line of household specialties at bargain prices



ESTABLISHED 1903

HISTORY has been making in Palmerton for the past twenty-five years, and during the greater part of that time this store has served the community with food and fuel. It has been a service unequalled and we are proud of our history as well as of the town we have helped to build. May it continue to increase and prosper as the years pass.

PALMERTON SUPPLY COMPANY

248 Delaware Avenue



Are You Going to Hold A Party or Picnic?

Then you will want good pure soft drinks

PALMERTON BOTTLING WORKS

440 Delaware Avenue

can furnish pure, wholesome Soft Drinks,, all flavors bottled from Blue Mountain Spring Water

A phone call will bring our delivery wagon

If your home needs

Painting or Decorating

or the walls need papering just drop a card to

F. E. BERGER

Palmerton, Pa.

and he will give your needs prompt attention.



ESTIMATES FURNISHED

An Easy Vacuum Washer

should be in every home that has electric current connections.

Come in and let us explain the EIGHT features that make it the most economical washer for home use.

Sold on easy terms

RAY'S ELECTRIC SHOP



RAY SOUERWINE, Prop.

Butz Block

279 Delaware Avenue

Since 1908

We have been in the millinery business in Palmerton and have watched with keen delight the rapid progress from a village to a prosperous borough of over seven thousand people. Such growth in a community covering a period of twenty-five years is an event worthy of celebration. May our town continue to grow and prosper.

THE LADIES SHOP

MISS LOUELLA LEWIS, Prop.

Palmerton Savings & Trust Company

THIRD AND DELAWARE AVENUE



ALL YOUR BANKING AT ONE BANK

At the Palmerton Savings and Trust Company, you will always find a tellers window conveniently at hand. If you wish to discuss business problems with an officer he will be glad to see you. If you want to send money, or take a trip abroad, there is our Foreign Exchange Department. Have you an estate problem to solve, some money to invest? Consult us about it. You can do ALL of your banking and Trust business with us. We are not only talking of service, but we are earnestly trying to render it.

CAPITAL and SURPLUS.....\$137,500.00

**Safe deposit boxes for rent in our burglar and fire proof vault
at \$2.00 and upwards per annum**

Our Dry Goods Department

contains silks, satins, voiles, white goods, serges, linings, percales, gingham, etc.

Our Notions Department supplies underwear, hosiery, silk lisle and cotton, buttons, belts, trimmings, ties, collars, etc.

We are equipped to fit the feet of men, women and children with high and low shoes, rubbers, boots, etc.

Here may be found wood and willow ware, hardware, groceries, flour, feed, hay, straw, gasoline and motor oils

PENN BOWMAN

Bowmanstown, Penna.

ESTABLISHED 1903

That tells a story of a long life of usefulness to the community. In the early days of Palmerton our store became the center for the distribution of men's clothing and furnishings. As the town grew our business also expanded until we were compelled to increase our floor space to present dimensions.

We are glad of the part we have been permitted to take in the development of Palmerton and our fervent wish is

MAY PALMERTON PEOPLE PROSPER

PHILIP BROTHERS

Men's Clothing and Furnishings

252 Delaware Avenue

WHITE OWL

AMERICA'S
MOST
POPULAR
CIGAR

Made in Palmerton

General Cigar Co., Inc.

T. A. Y. HODGSON

1070 Hazard Road

Sole agent in Palmerton and vicinity for

TEXACO

Gasoline and Motor Oils

from which hard carbon-forming compounds have been extracted, leaving only a soft, silky lamp-black form of carbon that blows away in the exhaust.

Pump stands 25 feet back from street line

AUTOMOBILE ACCESSORIES

TRAVELER'S DELICATESSEN

Ice cold soft drinks, ice cream, fruit, candy, cigars, cigarettes, tobacco, etc.

Cultivated white and colored water lilies, in season from May 20 until October frosts

The only comfort station in Palmerton, and for the use of the traveling public between Allentown and Wilkes-Barre.

HERE MAY BE SEEN

A comprehensive display of our city's minerals and mineral products. Best motorists' view of the Zinc Works.

Water lilies and gold fish pond. Thousands of gold fish. Visitors are welcome but interference will not be tolerated.

A modern sewage disposal plant suitable for farm houses and small communities.

Paint ore roasting kiln.

Mineral paint mines. The only known deposit in the United States of carbonate of iron ore suitable for fire proof red-brown mineral paint to be found outside of Tennessee.

The Hazard Public School, the kind of school your children will build thirty years from now. Used by the children during the day as a school, and by the populace in the evening for recreation.

The old Hazard Hotel, as good as when built. Used as a hostelry by the great, great grandfathers of the present generation when Indians roamed these hills. Abandoned as a hostelry over fifty years ago.

The building 1070 Hazard Road stands on the site of the first lime kiln built west of the Blue Mountains. In it was burned the lime used for erecting all the 18th century stone houses in this region and for building the locks and lock houses for the Lehigh Canal.

In 1895 the first commercial washery for building sand and gravel was built on this site. In those days washed sand was hard to sell because it was too clean. Now it must be clean.

When Hungry

for good home cooking drop into the

PARK RESTAURANT

322 Delaware Avenue

and try one of our 40c dinners. Home-made pastry has an appealing sound, and it is just as good as the kinds mother used to make.

We also serve ice cream, sodas, confectionery and light lunches

On with the Dance

Every Tuesday and Saturday evenings during the summer months music will be furnished by a good orchestra for dancing at

FERNBROOK PARK

on the Towamensing Trail near Aquashicola. Fine dance floor, refreshments and facilities for basket picnics. Good parking space.

Everybody Welcome

The oldest Farm Implement Store

in the neighborhood was established at Aquashicola in 1895. Since then the business has greatly increased and many other lines have been added.

W. A. BUCK

Implements—Tires—Harness

FUNERAL DIRECTOR

Bell and Lehigh Phones

Aquashicola, Pa.

CHARLES HORLACHER

Wholesale and Retail Beverages

Pur-Ox Soft Drinks

Established September 8th, 1909

Fourth Street
Palmerton, Pa.

On the Day

the first pick was used to start building Palmerton insurance of life and property had not gained great prominence among all classes of people. Only the very rich could enjoy this privilege. Today everybody wants insurance of some kind. Life, health, fire, all kinds of accident, automobile and various other forms of insurance may be had at little cost. Consult

CHAS. W. ZIEGENFUS

Palmerton, Pa.

The Home Beautiful

Cannot be an accomplished fact unless the furnishings are of a type that blend the entire home into one pleasing whole.

The furnishing of the home is our particular business and we are always at your service with floor coverings, stoves, furniture suites, bed room suites, refrigerators, etc.

PEOPLE'S FURNITURE STORE

R. A. CARLIN, prop.
442 Delaware Avenue

Our Store is New

But we are filling a long-felt want here in Millport.

Fresh Meats, Smoked Meats, Groceries and Canned Goods

are our stock and we are winning friends daily through the service we render. May we serve you?



MOONEY MEAT MARKET

Aquashicola, Pa.

MARTIN NEMECEK HOTEL

Cigars and Beverages

Sandwiches and Lunches

Dinners Served to Parties

At the Borough Line

Aquashicola, Pa.



DEDICATED
BY
THE HORSE HEAD CLUB
TO THE
EMPLOYEES
OF
THE NEW JERSEY ZINC COMPANY
AND
SUBSIDIARY COMPANIES
WHO SERVED THEIR COUNTRY DURING THE WORLD WAR
AND
IN MEMORY
OF
THESE EMPLOYEES
WHO MADE THE SUPREME SACRIFICE

JOSEPH ARICO	JNO.W.LUTHER,M.D.	BENJ.SERFASS
E.E.BENJAMIN	ROBERT MADER	R.F.SMITH
NATH.FINNIGAN	LOUIS MASSINA	LEON P.STARR
F.E.FRANTZ	E.H.OPLINGER	JOHN TOTB
FRANCIS M.GLYNN	CHAS.RICHARDS	ALBERT TRELOAR
IRA VAN DORN GRAY	JOHN RIDGEL	PETER WILHELM
HORACE HONGEN	SOREN RINCLUND	GEO.L.WILLIAMS
HARRY KESSLER	CLARENCE A.WILLIS	

This 200-pound plaque was cast in the foundry of the New Jersey Zinc Company at Palmerton to honor the company's employees who served their country during the World War and in memory of the employees who made the supreme sacrifice. The plaque was prominently displayed for many years in the Corporate Offices at Front Street in New York City. It is now a permanent fixture of the Palmerton Area Heritage Center at 410 Delaware Avenue.



knee-deep in history

PO Box 267
Palmerton, PA 18071

**Palmerton Area
Historical Society
Heritage Center**

410 Delaware Avenue
(610) 824-6954

**Thursdays & Saturdays
10am-1pm**

